



ITM-M-B10

1/4" B/W Camera



General Description

This product ITM-M-B10 is based on the most advanced CMOS mixed signal technology. It integrates image array, signal processing, timing and control circuitry, all on a single chip. Applying a simple circuit and enclosed in a stylish design casing, it becomes a complete camera. It is suitable for low cost application.

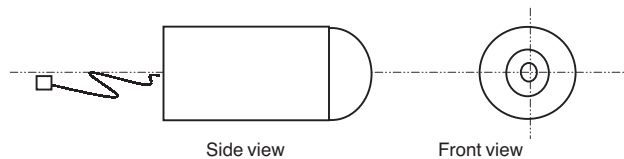
Features

- Small size..... Ø 12 x 40 mm
- Metal Casing
- Resolution 101 k pixels
- Operation Voltage 9V or 12V
- Lens f 4.9 mm F 2.8
- Low power consumption (< 200 mW)
- Coaxial cable with 3 pin socket
- Direct connect to standard video monitor
- High IR sensitivity for night time application
- Auto exposure control
- Gamma correction..... -0.45/1.0
- Auto gain control -18 dB
- Automatic black level calibration
- Anti-Blooming

Specification

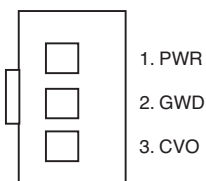
Imager	1/4" CMOS imager sensor
	OV5116
Scanning	2:1 Interlace
Shutter	1/50 to 1/6,000 sec
Video Output	1V p-p Composite video (75 Ω)
Picture Element	352 × 288 pixel
Effective image area	3.2 mm × 2.5 mm
S/N Ratio	> 46 dB (AGC on)
Resolution	260 TV lines
Min Illumination	0.5 Lux at f 1.4
Operation Voltage	9–12 VDC
Operation Current	18 mA max.
Connectors	PWR, Video, GND
Lens	f 4.9 mm F 2.8
	FOV 36° × 27°
Dimension	Ø 12 × 40 mm

Illustration Diagram



Pin Description

PWR	Power Supply 9–12 V DC
GND	Common Ground for power and video
CVO	Composite Video Output
	Direct connect to TV/Monitor



3-pins socket, pitch 2 mm